

The Great East Japan Earthquake and National DRR Policy

14 June 2011
Takeo Murakami
Cabinet Office of Japan

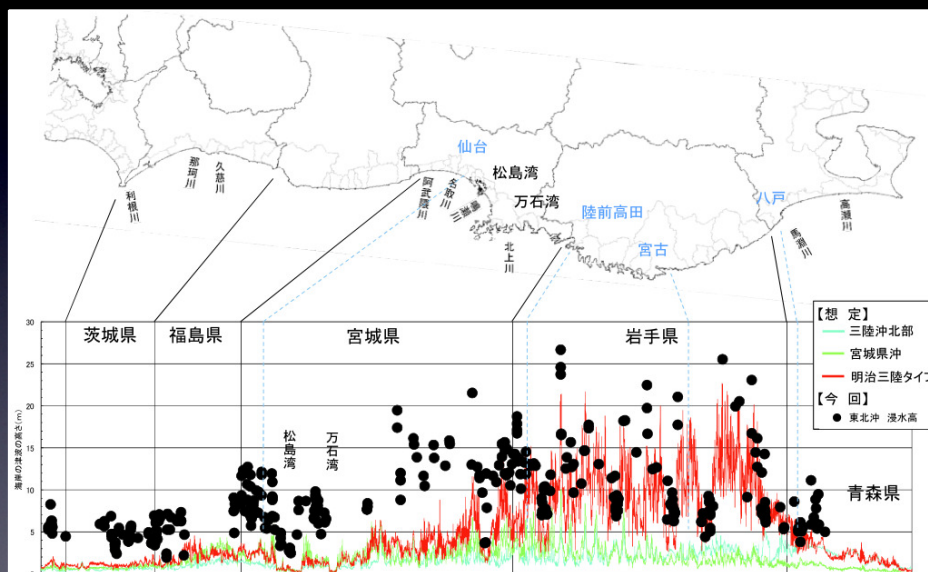
Three months have passed...

- Magnitude 9.0 earthquake
- 15,270 dead and 8,499 missing (as of 30/5/2011)
- More than 90% killed by water
- 241 cities and towns affected
- Evacuees: maximum 470k; still 100k remains (as of 30/5/2011)

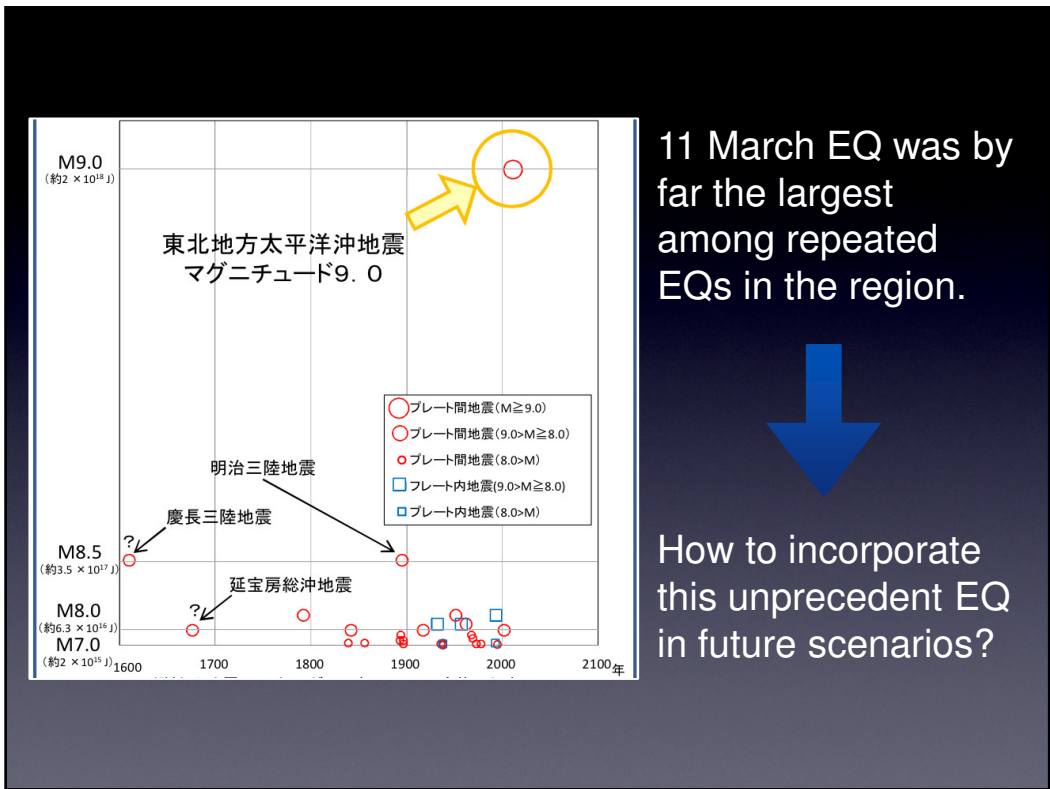
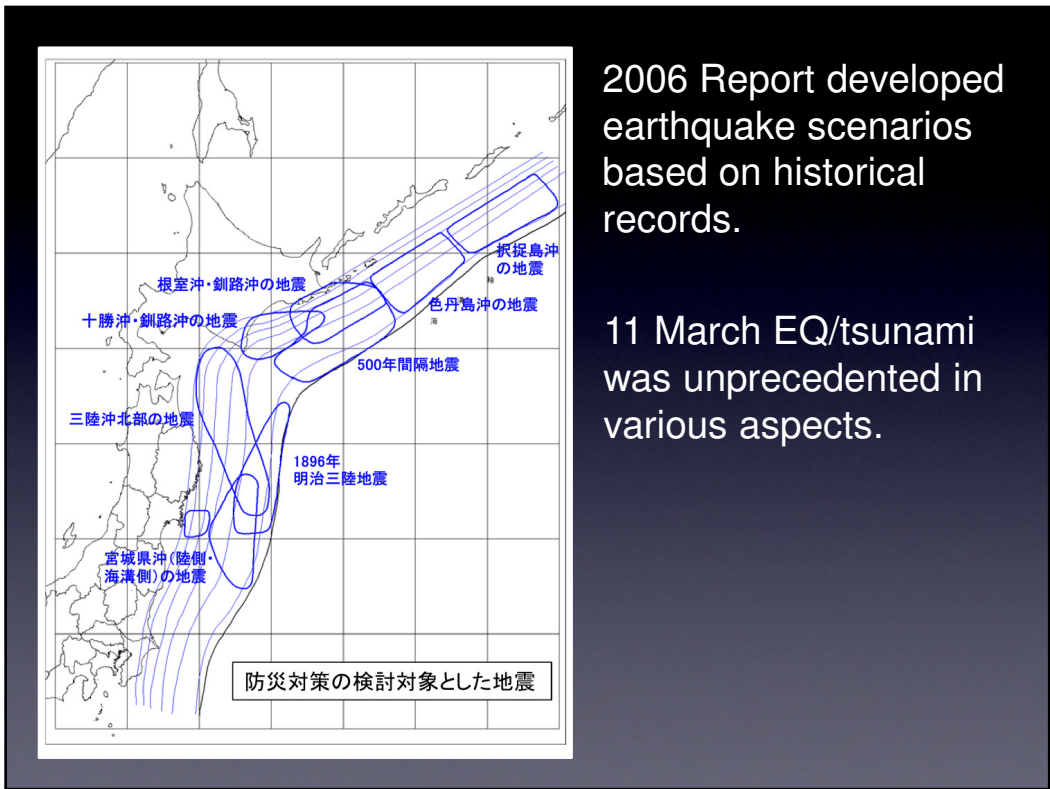
Conclusions of 2011 White Paper on DM

- 1. Review damage projections
- 2. Revise disaster plans
- 3. Prepare for other devastating earthquakes
- 4. Redefine roles of central and local governments
- 5. Strengthen support to disaster victims
- 6. Share lessons with other countries

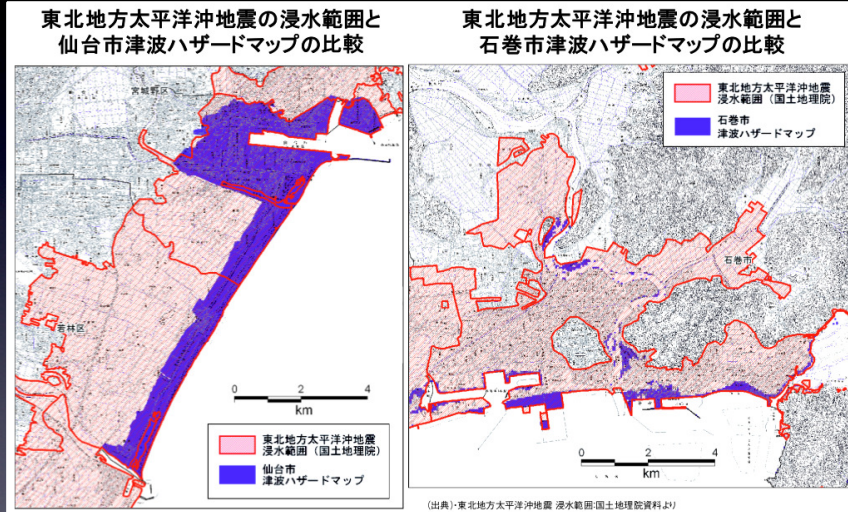
1. Review Damage Projections



Large difference in projected and actual height of tsunami

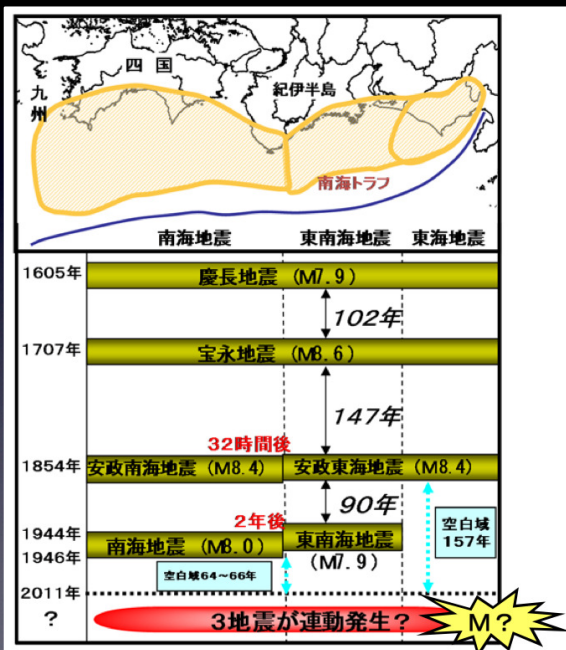


2. Revise Disaster Plans



Actual areas of inundation far exceeded those projected in hazard maps.

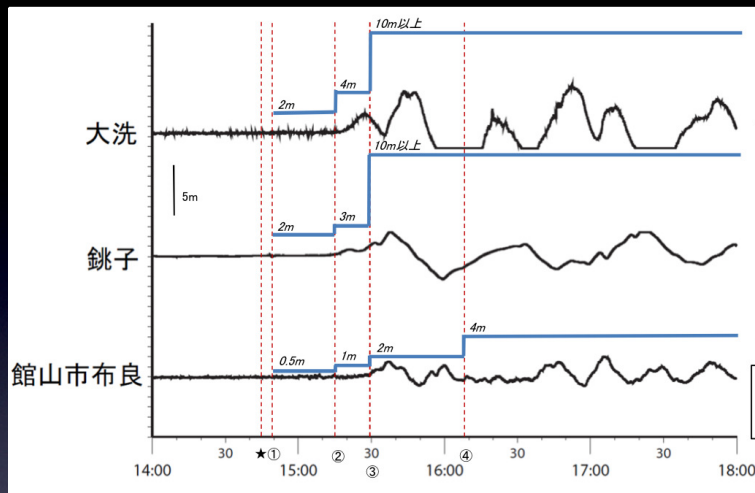
3. Prepare for Other Devastating EQs



Tokai EQ and related EQs are predicted to occur in near future.



But how shall we estimate scale of future EQ, based on a few historical records?



JMA released first tsunami warning in 3 minutes and then gradually upgraded as more analyses made.

The initial lower estimated may have caused delay in citizens' evacuation.

Conclusions of 2011 White Paper on DM

- 1. Review damage projections
- 2. Revise disaster plans
- 3. Prepare for other devastating earthquakes
- 4. Redefine roles of central and local governments
- 5. Strengthen support to disaster victims
- 6. Share lessons with other countries